

CVCH 2007  
Group 4  
Working on Riegl

Bru Castro, Miguel Ángel  
Core, Manuela  
Farrokhi, Alireza  
Leopardi, Antonio  
Skoura, Anna





# View of the buildings





# Scanning

1.- Autoptical analysis of the site for the position to the scan on different station. Positions of the Station



# Scanning

3.- General Scanning. Low resolution

4.- Select the correct reflectors, manually.

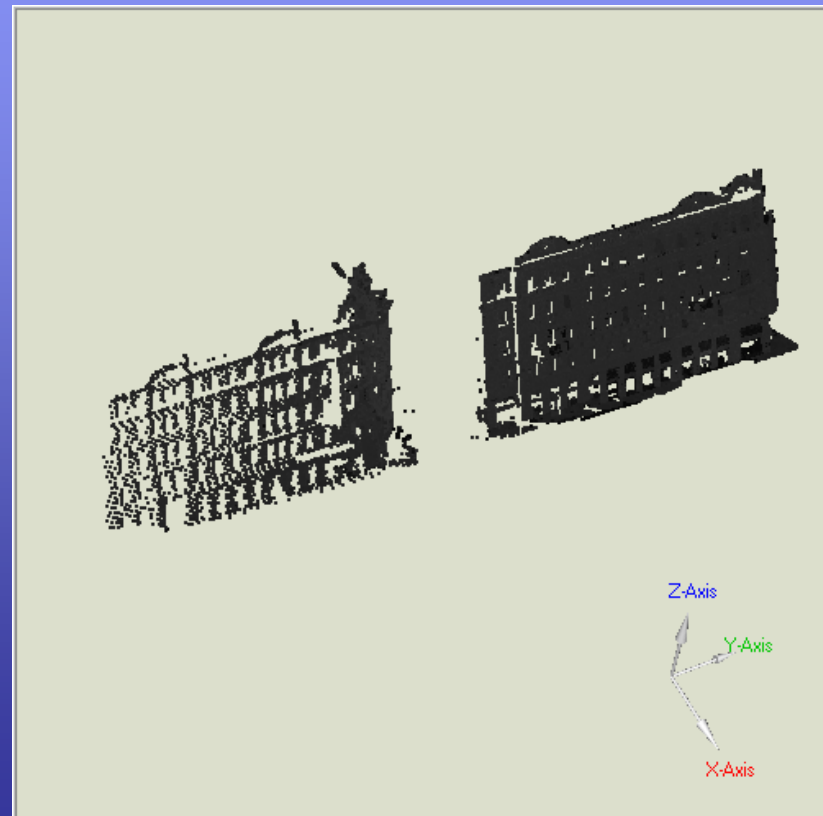
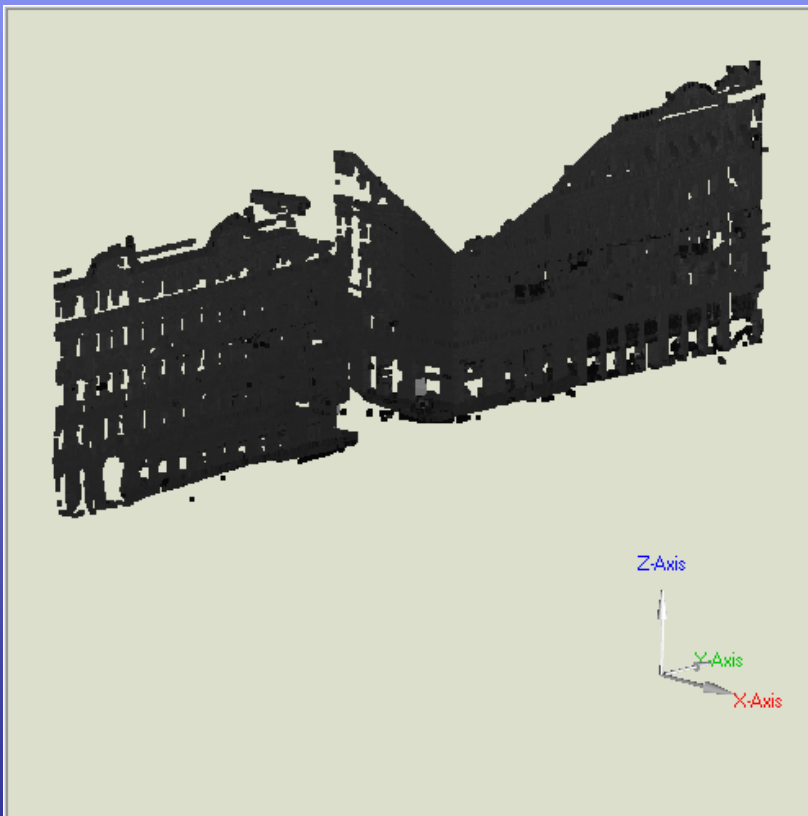
5.- Accurate scanning. Save.

6.- Select determinates zones for more accurate scanning. Save.

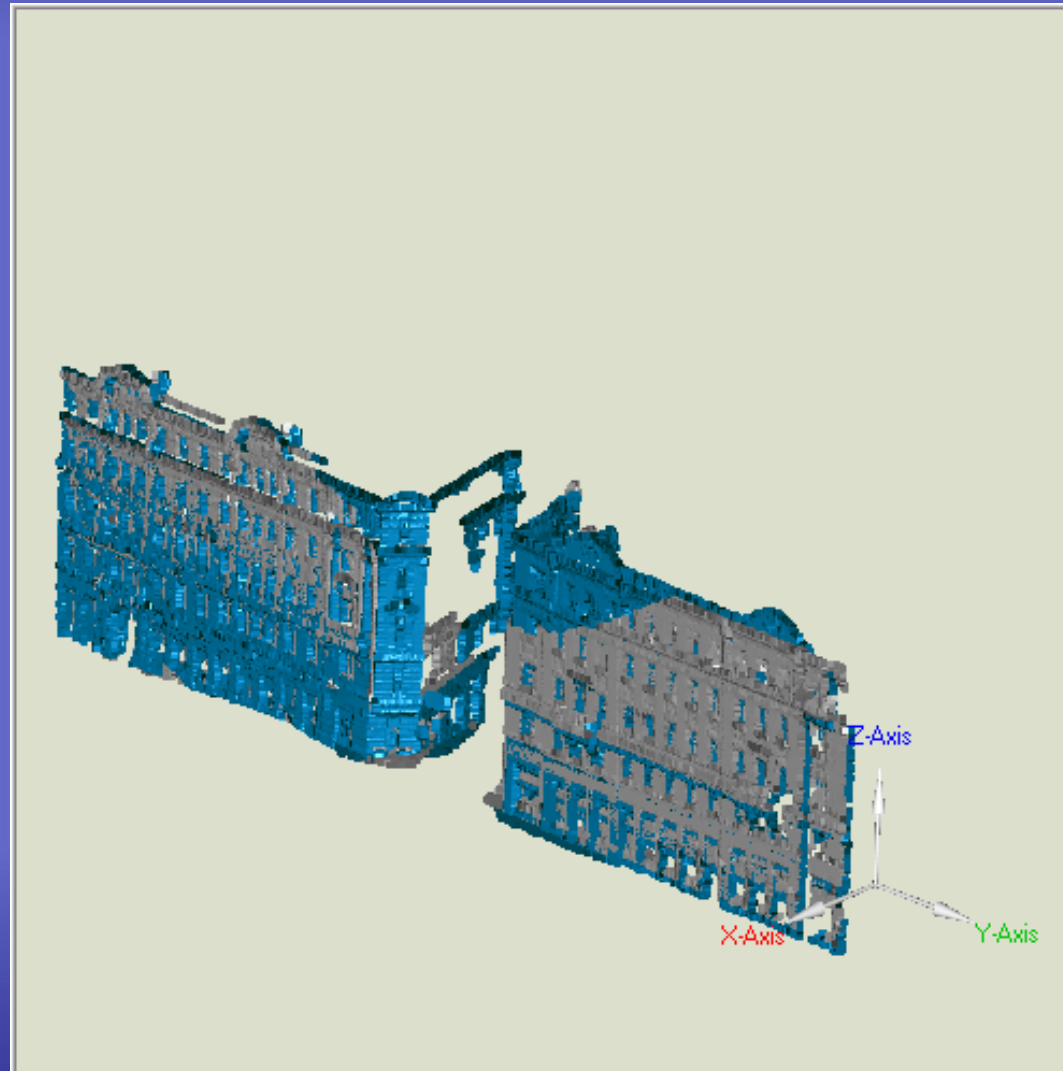
Finish the field work, and start to work in the laboratory.

# Working with Geomagic Studio 9

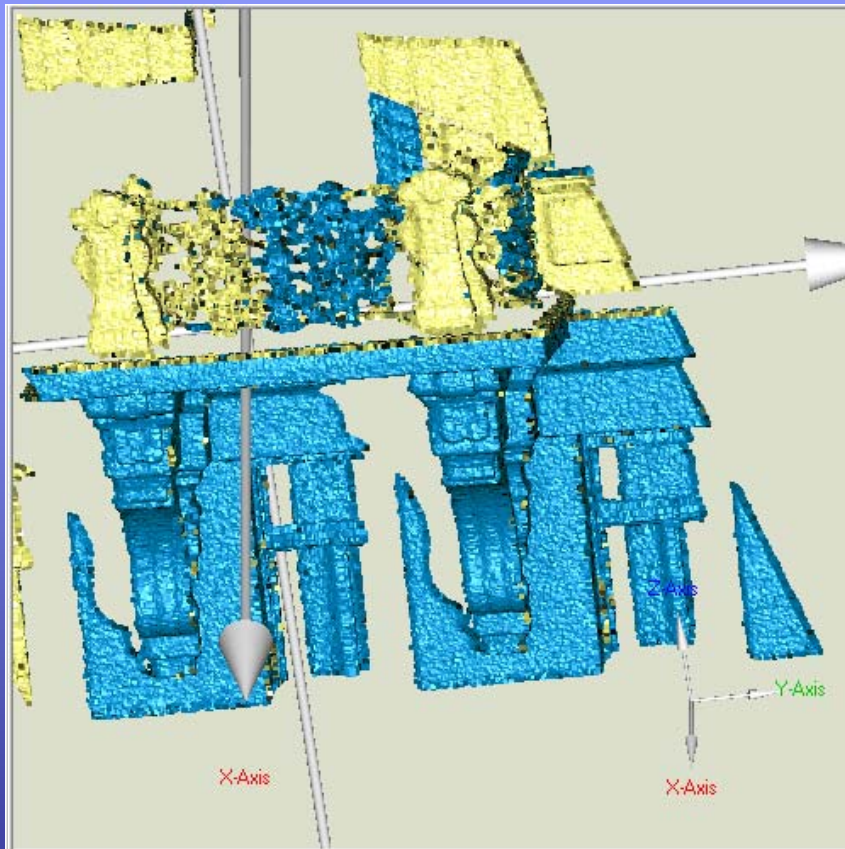
- 1.- Import the scan acquisition, after an initial processing
- 2.- Select and delete the unwanted areas



Make the surface.



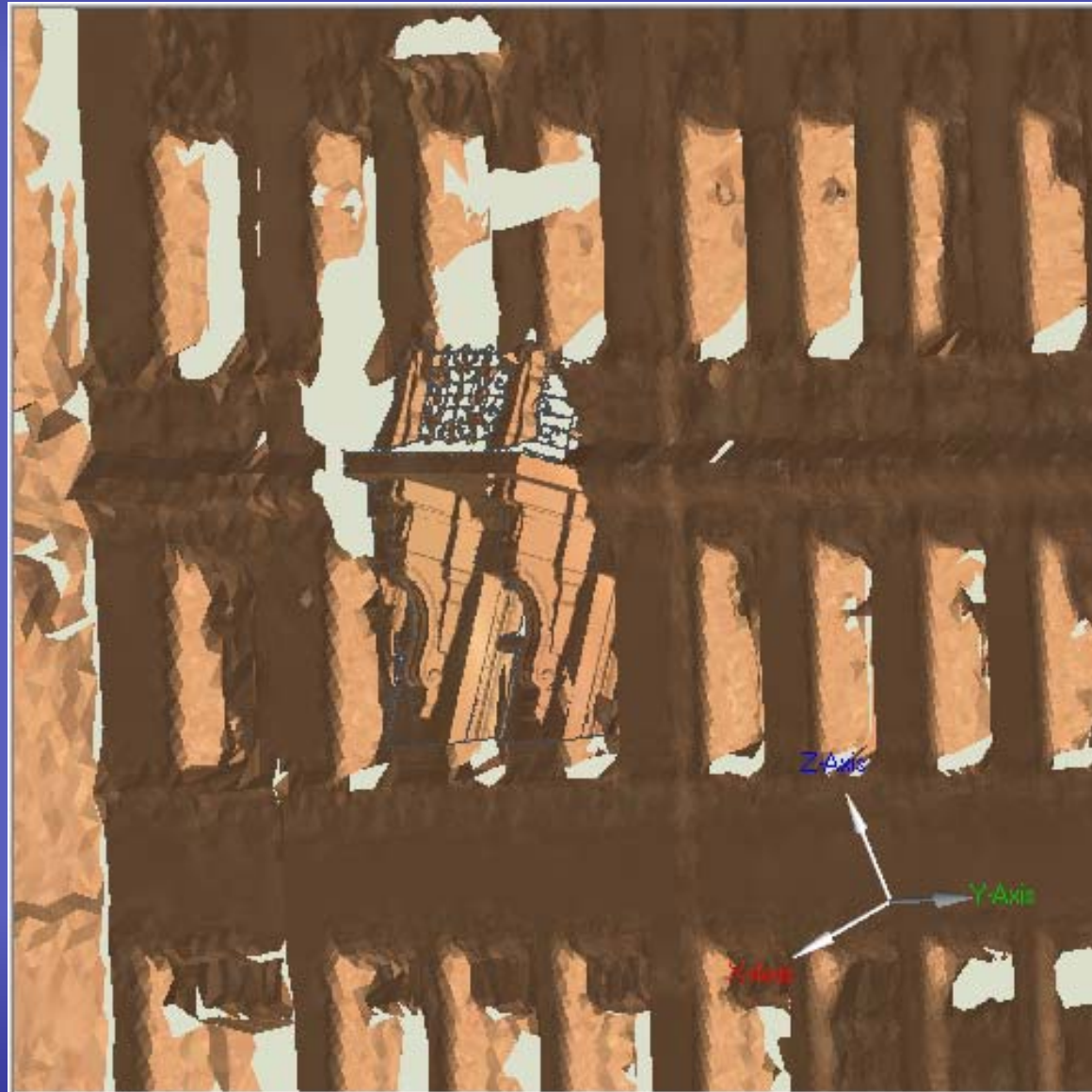
# Insert a more accurate scanning



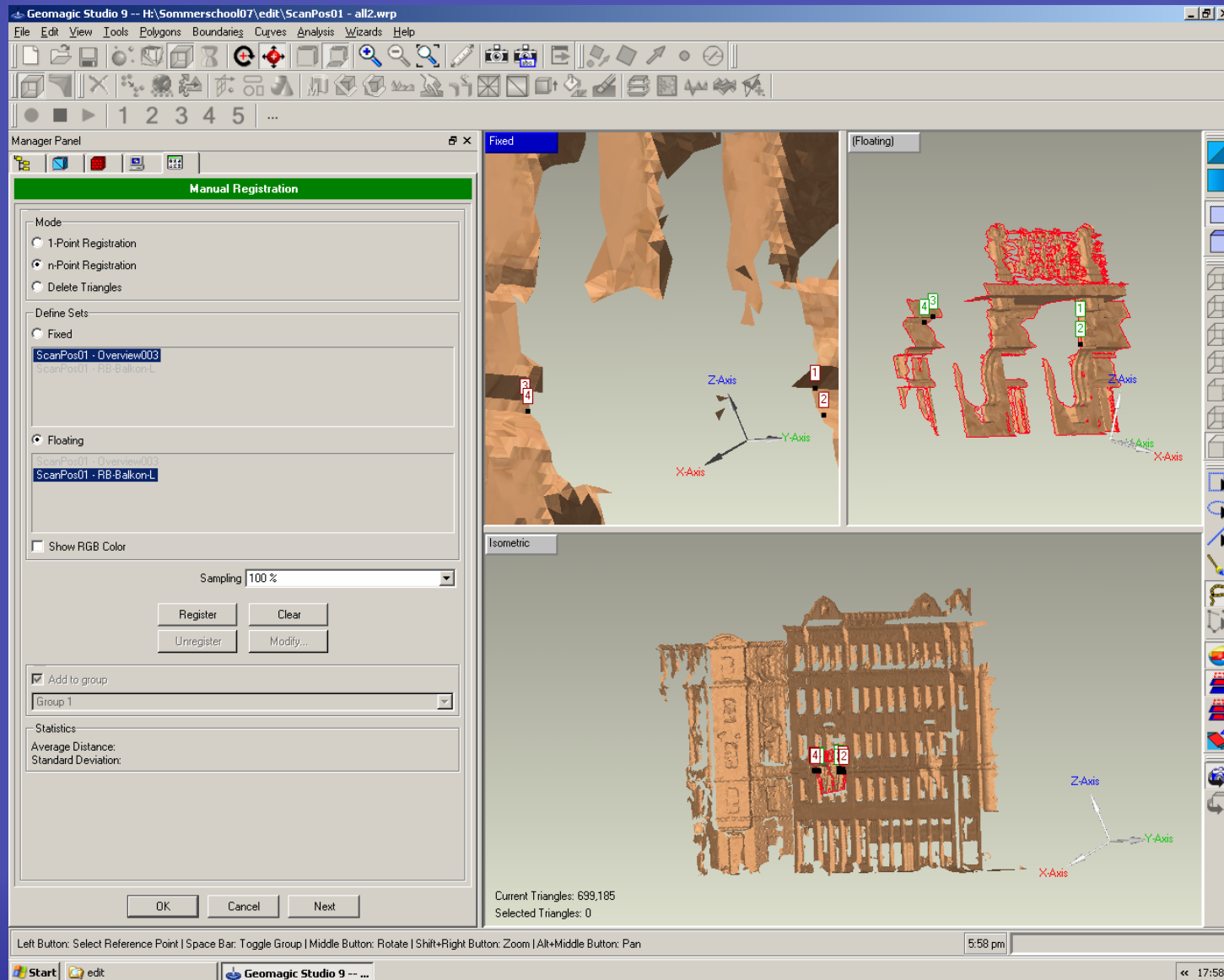
Same working.  
Points  
and  
make the surface



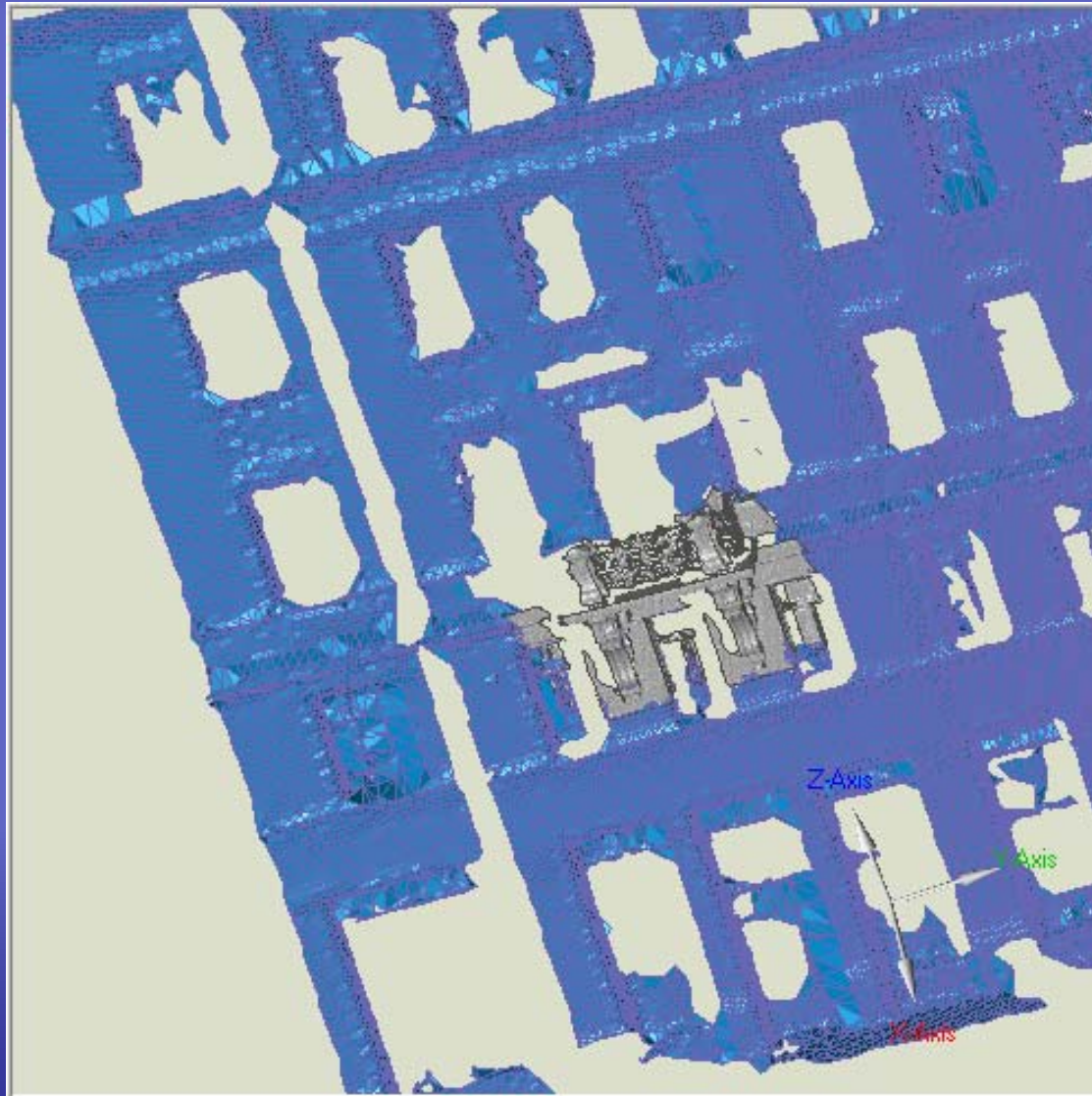
# Global registration



# Manual registration



Completed manual registration,  
after trying different possibilities





and look here, at the hard working team 4

Thank you for your Attention.

